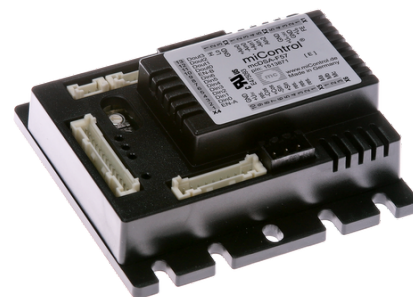


Servo amplifier

mcDSA-F57

Article number: 1513871

 Certification:  **US** *1
E475093


Picture similar

Technical data

Absolute maximum rating (destruction limits)	
Power supply voltage Up no polarity reversal protection	70 V
Continuous Electronic supply voltage Ue no polarity reversal protection	33 V
Short term peak voltage < 1s Ue no polarity reversal protection	37 V
Power	
Electronic supply voltage Ue	9..30 V
Electronic current consumption@ Ue=24V*2	typ. 60 mA
Power supply voltage Up	9..60 V
Max. output current	50 A
Continuous output current @ Up=24V*3	14.5 A
Continuous output current @ Up=48V*4	13 A
Continuous output current (certified UL)*5 @Up=24V	9.5 A
@Up=60V	9.0 A
PWM	
PWM frequency	32 kHz
Mechanical	
Size LxWxH	78 x 74 x 29 mm
Weight	95 g
Environment	
Protection class	IP20
Ambient temperature (operation) (certified UL)	-40..40 °C
Ambient temperature (operation) (not certified)	-40..70 °C
Ambient temperature (storage)	-40..85 °C
Rel. humidity (non-condensing)	5..90 %
CAN bus	
Protocol	DS301
Device profile	DS402
Max. baudrate	1 Mbit/s
CAN specification	2.0B
Galvanically isolated	yes

Sensor supply (Encoder)	
Output voltage	5 V
Max. output current	0.2 A
Encoder	
Type	sin / cos
Signals	+Sin,-Sin,+Cos,-Cos
Resolution	13 bit per sine period
Input voltage	1 V peak-peak, differential
Signal type	sine/cosine, analog, differential
Digital inputs	
Number - digital inputs	7 (Din0..6)
Number - hardware enable inputs	2 (EN-A..B)
Low voltage	0.5 V
High voltage	8..30 V
Digital outputs	
Number	4 (Dout0..3)
Continuous output current (certified UL)	0.3 A
Load	resistive, inductive
Output voltage	Electronic supply voltage Ue
Signal type	positive switching
Analog inputs	
Number	3 (Ain0..2)
Signal type - Ain0..1	+/- 10 V, 12 Bit, differential
Signal type - Ain2 / PT1000	0.5 V, 12 Bit, single ended / PT1000

*1 The certified performance data must be observed (see UL Instruction Note)

*2 power amplifier switched off, 5V output (sensor supply) is free

*3 connector cable with max. possible cable cross-section, PWM frequency 32 kHz, ambient temperature 40 °C (t >40 °C derating), RMS current: 14.5 A → 10.3 Aeff
no guarantee, since value is determined empirical, please consider the application notes to determine the continuous current*4 connector cable with max. possible cable cross-section, PWM frequency 32 kHz, ambient temperature 40 °C (t >40 °C derating), RMS current: 13 A → 9.2 Aeff
no guarantee, since value is determined empirical, please consider the application notes to determine the continuous current*5 connector cable with max. possible cable cross-section, PWM frequency 32 kHz (SVPWM), ambient temperature 40 °C, I/O's and 5V output active, RMS current:
9.5 A → 6.7 Aeff, 9.0 A → 6.4 Aeff

Additional technical data are available in mcManual.



miControl® GmbH

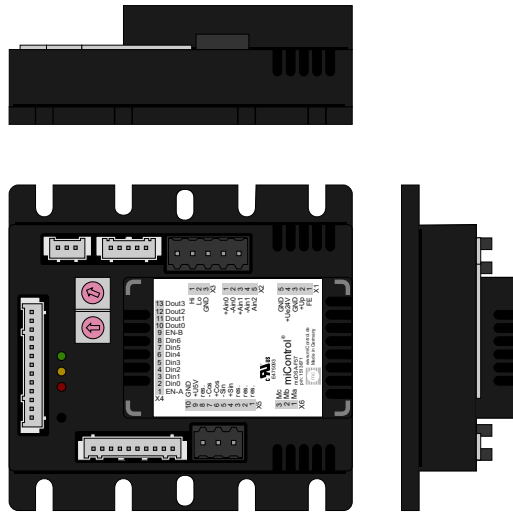
Chausseestraße 34

14979 Großbeeren (bei Berlin)

Copyright 2023 by miControl® - Modifications and errors excepted
mcDSA-F57 - PV1.11.00.00 / DV1.00.00.02

Web: www.miControl.de e-mail: info@miControl.de Tel.: +49 (3379) 312 59-0 Fax: +49 (3379) 312 59-19

Scheme



©2023 by miControl

Terminal assignment

X1 Supply		
1	FE	Functional earth
2	+Up	Power supply voltage
3	GND	Ground for power supply voltage
4	+Ue24V	Electronic supply voltage
5	GND	Ground for electronic supply voltage
X2 Analog inputs		
1	+Ain0	Analog input 0, plus
2	-Ain0	Analog input 0, minus
3	+Ain1	Analog input 1, plus
4	-Ain1	Analog input 1, minus
5	Ain2	Analog Input 2 (5V) / PT1000
X3 CAN bus		
1	CAN Hi	CAN High
2	CAN Lo	CAN Low
3	CAN GND	CAN Ground
X4 Digital inputs/outputs		
1	EN-A	Hardware enable channel A
2	Din0	Digital input 0
3	Din1	Digital input 1
4	Din2	Digital input 2
5	Din3	Digital input 3
6	Din4	Digital input 4
7	Din5	Digital input 5
8	Din6	Digital input 6
9	EN-B	Hardware enable channel B
10	Dout0	Digital output 0
11	Dout1	Digital output 1
12	Dout2	Digital output 2
13	Dout3	Digital output 3

X5 Encoder		
1	res.	Reserved
2	res.	Reserved
3	res.	Reserved
4	+Sin	Encoder, plus sine signal
5	-Sin	Encoder, minus sine signal
6	+Cos	Encoder, plus cosine signal
7	-Cos	Encoder, minus cosine signal
8	res.	Reserved
9	+U5V	5V output voltage for sensor supply Sensors: encoder
10	GND	Ground for sensor supply Notice: don't connect with system GND
X6 Motor		
1	Ma	Motor phase A
2	Mb	Motor phase B
3	Mc	Motor phase C